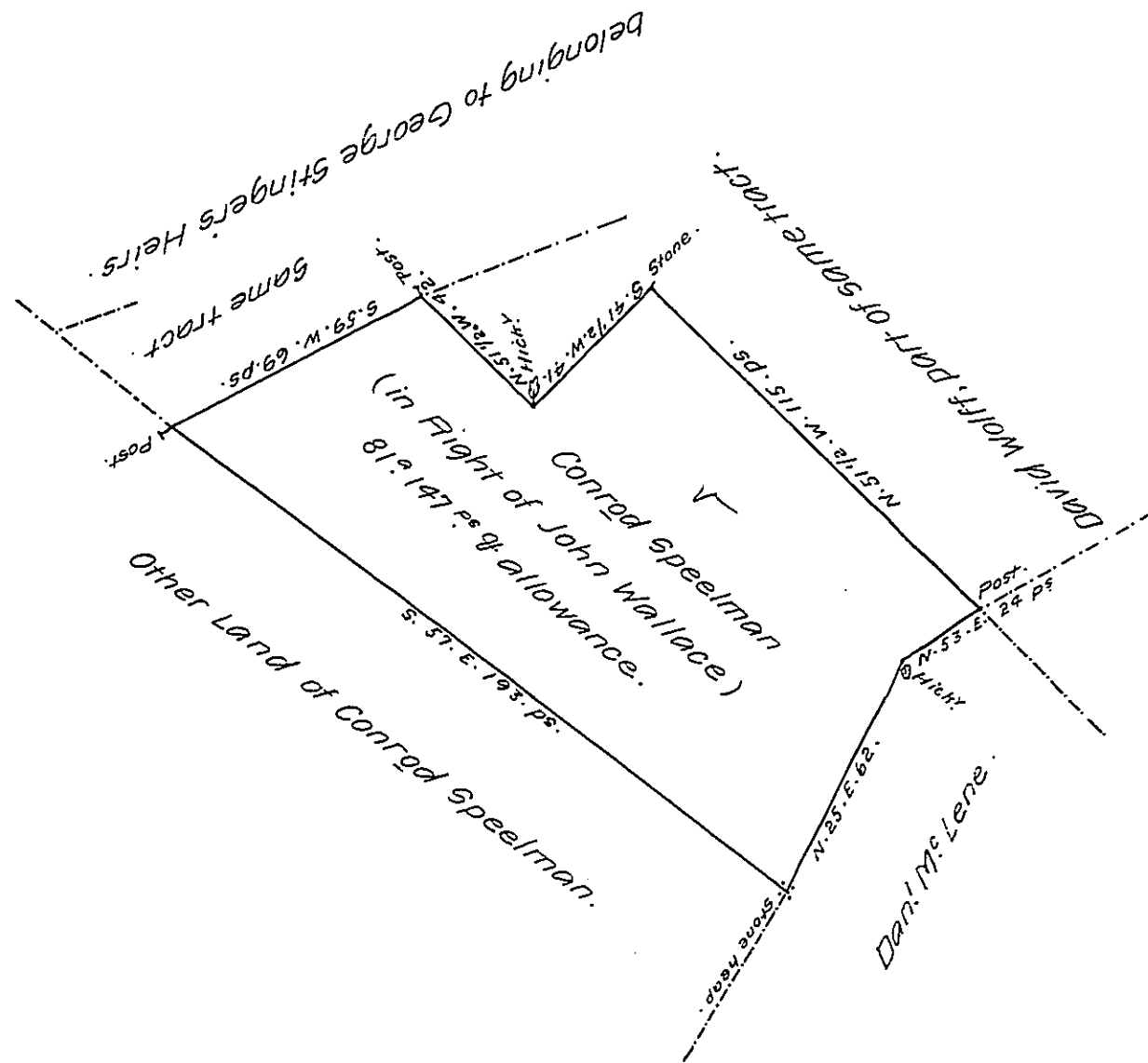


FORM No. 1.



The above described tract of Eighty One acres, One hundred & forty seven perches of Land and allowance, is part of a larger tract of One hundred and Ninety three acres, One perch, & allowance. Situate in Washington Township, Franklin County which was surveyed to John Wallace the 26th day of May 1808 in pursuance of his Warrant dated 15th day of January 1768. Resurveyed and divided off the 5th day of October, 1808.

P. Tho. Kirby. D. S.

To Samuel Cochran Esq.
Surveyor Gen^l of Pennsylvania.

IN TESTIMONY that the above is a copy of the original remaining on file in the Department of Internal Affairs of Pennsylvania, made conformably to an Act of Assembly approved the 16th day of February 1833, I have hereunto set my hand and caused the Seal of said Department to be affixed at Harrisburg, this sixteenth day of April 1907.

Leach N. Larson
Secretary of Internal Affairs.